

Autumn  
Teruhiro Yanagihara

Humanscale **kvadrat**

Global Partnership





## Autumn

Type: Upholstery

Composition: 100% recycled polyester (PET)

Number of colours: 14

Width: 140cm

## Autumn

*Autumn* is an upholstery textile woven from 100% recycled polyester. It comes in a nuanced colour palette designed by Teruhiro Yanagihara, inspired by the transient nature of the 'ageing season'.

The textile is constructed with a recycled polyester yarn made from used plastic bottles and woven in a layered double-beam weave. This composition gives *Autumn* a soft, natural hand and allows it to be continuously recycled with no degradation in quality.

A dark, unicoloured background is used across *Autumn's* colour palette, and offers a rich contrast to the melange top layer, which features yarns created from a mix of two fibre-dyed colours. The scale comprises a selection of neutrals including a white melange, papery beige notes and greys, and characterful reds, blues, and oranges, alongside a lively black shade.

Teruhiro Yanagihara: *"I chose a soft gradation of colours to represent the richness of ageing. I felt that although the textile is made of 100% recycled polyester, it expresses the sensitivity and transience in nature and a sense of natural fibres."*

*Autumn* is suitable for a wide range of commercial and residential applications.

### Teruhiro Yanagihara

Japanese design Teruhiro Yanagihara launched his studio in 2002. Inspired by the idea of transcending conventional creative paradigms, and moved by the intuitive warmth of Scandinavian living, Teruhiro aims to elevate the human experiences of the quotidian through emotional dialogues and timeless attention to detail. His clients include Kvadrat, 1616/Arita Japan, Karimoku New Standard, Skagerak, Offecct, and Kimura Glass, among others, and his works are part of the permanent collections at the National Centre for fine Arts in Paris and the Stedelijk Museum in Amsterdam.

Teruhiro also runs 'Vague' by Teruhiro Yanagihara Studio (TYS) – housed in historic structures in Kobe and Arles – which connects the creative dots between Japan and the rest of the world. 'Vague', which is French for 'wave', is the spatial expression of TYS design philosophies and is an in-between space for creativity and a laboratory for experimental ideas. Flowing with the organic momentum of a wave, it is a home for a fluid spectrum of collaborative projects, such as exhibitions, food research and residencies.

### Kvadrat

Kvadrat was established in Denmark in 1968 and has deep roots in Scandinavia's world-famous design tradition. A leader in design innovation, Kvadrat produces high-performance, design textiles, rugs, acoustic and window covering solutions for both commercial and residential interiors.

Our products reflect our commitment to colour, quality, simplicity and innovation. We consistently push the aesthetic, technological and functional properties of textiles. In doing so, we collaborate with leading designers, architects and artists including: Miriam Bäckström, Raf Simons, Ronan and Erwan Bouroullec, Thomas Demand, Olafur Eliasson, Alfredo Häberli, Akira Minagawa, Peter Saville, Roman Signer, Doshi Levien and Patricia Urquiola.



## Autumn

Design: Teruhiro Yanagihara

Type: Upholstery, panel fabric  
Composition: 100% recycled polyester  
Yarn type: Filament  
Binding: Dobby  
Width: Approx. 140 cm, 55 inches  
Weight: Approx. 590 g/lin.m, 19 oz/ly  
Repeat: None

Colour difference may occur

Cleaning: Vacuum clean frequently, ideally every week if fixed covers. Remove stains as soon as they occur, with clean warm water or sparkling water. Extraction clean when necessary. Extraction cleaning might dissolve water based glue. Pay attention to temperature and amount of cleaning fluid.

Disinfection, see kvadrat.dk

More info: Care and maintenance kvadrat.dk



## Autumn

### Abrasion

Min. 50.000 Martindale rubs, EN ISO 12947

### Pilling

Note 4, EN ISO 12945

### Seam slippage

Seam parallel to warp: 4.0 mm parallel to weft: 4.0 m  
EN ISO 13 936-2 180 Newton

### Snagging

Grade 1, ICI Testmethod FAB 29, Tumble-Box

### Lightfastness

Note 6-7 ISO 105-B02

### Fastness to rubbing

Dry note 4-5 ISO 105-X12  
Wet note 4-5 ISO 105-X12

### Flame resistance

AS/NZS 3837 class 1  
ASTM E84 Class A Unadhered  
ASTM E84 Class A Adhered  
BS 5852 Part 1 with treatment \*  
BS 5852 Crib 5 with treatment \*  
BS 7176 Low Hazard  
EN 1021-1/2  
IMO FTP Code 2010 : Part 8  
NFPA 701 with treatment \*  
SN 198 898 5.2 with treatment \*  
US Cal. Bull. 117-2013  
ÖNORM B1/Q2 with treatment \*

Free from added flame retardant chemicals as standard

*\* To pass this test flame retardant treatment is necessary.  
We are looking into more environmentally friendly  
alternatives but for now the external finisher may use a  
treatment containing halogen based flame retardants*

**ACT Guidelines Woven fabrics****Flammability**

US Cal. Bull. 117-2013

**Dry & Wet Crocking AATCC 8**

Dry Crocking: Grade 4.5-5.0

Wet Crocking: Grade 4.5-5.0

**Colour Fastness to Light AATCC 16**

Grade 4.0-5.0 minimum 40 hours

**Physical properties**

Pilling Class 4 ASTM D4970

Breaking Strength warp 306 / weft 217 lbs. ASTM D5034

Seam Slippage warp 120 / weft 108.5 lbs. ASTM D 4034

**Abrasion ASTM D4966**

50.000 cycles Martindale – High Traffic / Public Spaces

**Quality benefits**

Complies with Möbelfakta

Good abrasion

Very good lightfastness

Washable

**Environmental benefits**

Complies with EU Ecolabel

Free of intentionally added PFAS

Mono-material designed for circularity

REACH compliant

Californian Proposition 65 list compliant

LBC Red list compliant

Healthier Hospitals compliant

**Green building certificates**

Greenguard Gold: Low chemical emission

Health Product Declaration (HPD): Declaring textile content and substance

**Country of origin**

Turkey

**Launch**

2024

Kvadrat packaging and cardboard is recyclable. Cardboard material is FSC certified and / or contains recycled content.

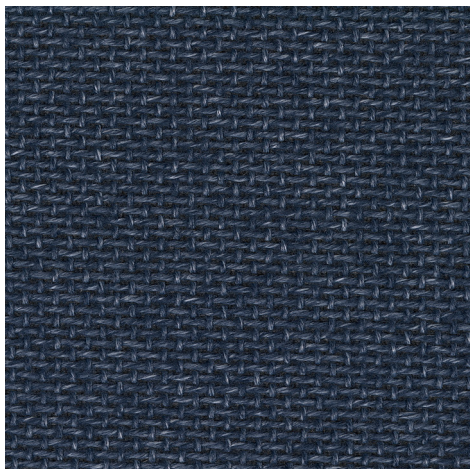
Kvadrat A/S is ISO 9001 and ISO 14001 certified

For further information

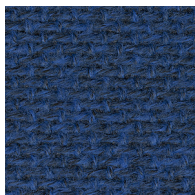
[kvadrat.dk](https://kvadrat.dk)

# kvadrat

## Autumn



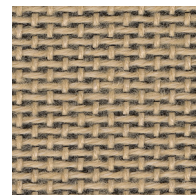
HS AU75 / KV 0751



HS AU77 / KV 0771



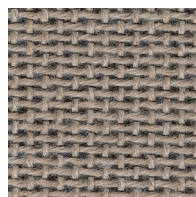
HS AU79 / KV 0791



HS AU22 / KV 0221



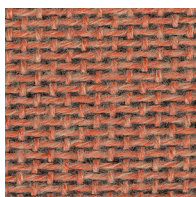
HS AU19 / KV 0191



HS AU33 / KV 0331



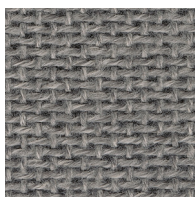
HS AU36 / KV 0361



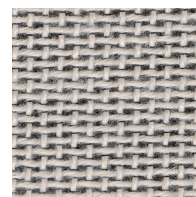
HS AU55 / KV 0551



HS AU17 / KV 0171



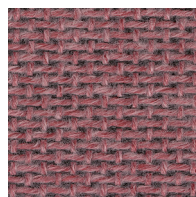
HS AU13 / KV 0131



HS AU10 / KV 0101



HS AU97 / KV 0971



HS AU65 / KV 0651



HS AU68 / KV 0681