



Pinstripe

NEW PRODUCT ANNOUNCEMENT

Introducing Pinstripe, a new mesh textile created for Humanscale by Elizabeth Whelan Design.



Overview

It was Humanscale's Diffrient World chair that initially motivated Elizabeth Whelan to begin creating Pinstripe. Intrigued by the way in which the mesh fabrics for Diffrient World are installed in suspension on the back and seat frames, she adopted "suspension" as a concept to explore through mesh fabric.

Elizabeth didn't have to look far beyond her New York City studio to find an interesting and successful example of suspension: the Brooklyn Bridge. Specifically, the twisted, vertical cables of this great bridge directly inspired Pinstripe's design. These vertical cables, or suspenders, were thicker than the diagonal stays that were also used in the bridge structure. In Pinstripe, the thicker soft yarn mimics these vertical suspenders, and the thin gray monofilament yarn represents the thinner steel stays. All other yarns in the fabric are clear monofilament yarns, which allow greater light and transparency to come through the fabric—similar to the effect the cable pattern of the Brooklyn Bridge has on the view of the Manhattan cityscape.

Pinstripe is also designed specifically to work within the goals of the Diffrient World chair. Though it is lightweight, the fabric provides the strength and support of a much heavier mesh, using two different monofilament stretch yarns to provide firmness and excellent recovery of the fabric. Only the pinstripe yarns take the dye (which also means less dye is used), and the monofilament yarns are grey instead of black, giving a more neutral background to the pattern and allowing light to pass through the fabric. This careful balance and orchestration results in clearly articulated colors and a well-blended interior space that's free of visual noise.

Pinstripe achieved excellent testing results on all rigorous testing by the industry in general and by Humanscale specifically. For example, it achieved 150,000 double rubs on the Wyzenbeek, and 150,000 double rubs on the reverse Wyzenbeek. Adding good looks to its high performance, Pinstripe also comes in a number of beautiful color options to work with our existing upholstery fabrics.



TECHNICAL INFORMATION

Width

48"

Repeat

1/4" Vertical, no Horizontal repeat

Contents

82% Polyester, 18% Nylon

Finish

Stain Resistant

Abrasion

150,000 double rubs, ASTM D 4157,
#10 cotton duck, Wyzenbeek

Brush Pill

Class 5, ASTM D 3511

Flammability

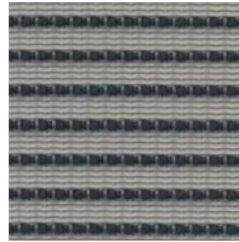
Passes California technical bulletin 117, section E

Colorfastness to Light

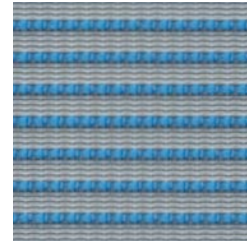
Grade 4.3, 40 hours AATCC, Test Method 16E

Crocking

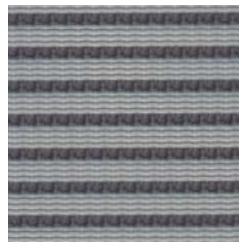
Dry: Grade 4, Wet: Grade 5, AATCC Method 8



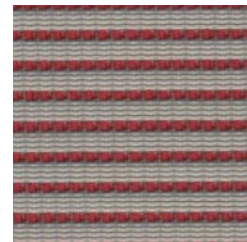
Black N10*



Cyan N58**



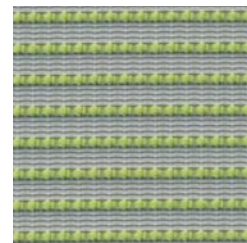
Graphite N03*



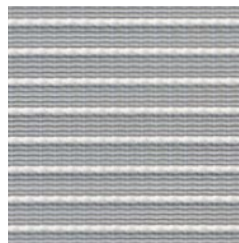
Crimson N74**



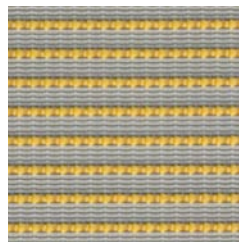
Silver N02*



Citron N43**



White N01*



Cadmium Yellow N34**

* Currently Available
** Available Q1 of 2013