

Reflect
Patricia Urquiola

Humanscale **kvadrat**

Global Partnership



Reflect

Reflect is a sophisticated twill weave upholstery textile designed by Patricia Urquiola made from recycled polyester, with a natural expression and a particularly tactile touch.

Unusually for a textile crafted from recycled fibres, *Reflect* has a particularly delicate and soft hand. Made from recycled polyester, it offers excellent functional performance, as well as a full scale of vibrant colours.

Reflect is a 'faux-uni': initially, it appears monochromatic but, under closer inspection, reveals a dense diagonal weave which combines two different colours. Its twill woven construction – identical to that of *Relate* – subtly references the world of fashion and captures a sense of movement.

Intriguingly, *Reflect*'s look changes depending on the light, colourway and angle of the viewer: the stripe-like lines that play across its surface appears to switch between horizontal, vertical and diagonal.

The versatile palette for *Reflect* comprises 35 colourways and expresses confident colour combinations by matching warm notes with closely related nuances.

Patricia Urquiola: *"I wanted to play with colours and rethink the concept of melange. Together with Kvadrat, we chose to pair hues that are very close in the colour scale to give much more volume to the texture, which results in a powerful monochromatic effect. Most importantly, Reflect is crafted from 100% recycled fibre and still able to provide such a soft hand."*

Reflect is suitable for contract and private use. Subtle differences in the appearance of the textile will occur during production.

Patricia Urquiola

Patricia Urquiola studied architecture and design at the Universidad Politécnica de Madrid (Technical University of Madrid) and completed her studies at the Politecnico di Milano where she graduated under the mentorship of Achille Castiglioni. In Spain, she was awarded the Golden Medal for Merits in Art and received the Cross of the Order of Isabella the Catholic.

In 2001 Patricia Urquiola founded her own studio where she specialised in industrial product design, architecture, art direction and strategy consulting. Creative Director of Cassina since 2015, she works with a roster of leading design companies. Patricia Urquiola also gives lectures at leading universities and has work shown in prominent museums and design galleries across the world.

Reflect

100% Post-consumer Recycled Polyester

140 cm wide

35 colourways

Kvadrat

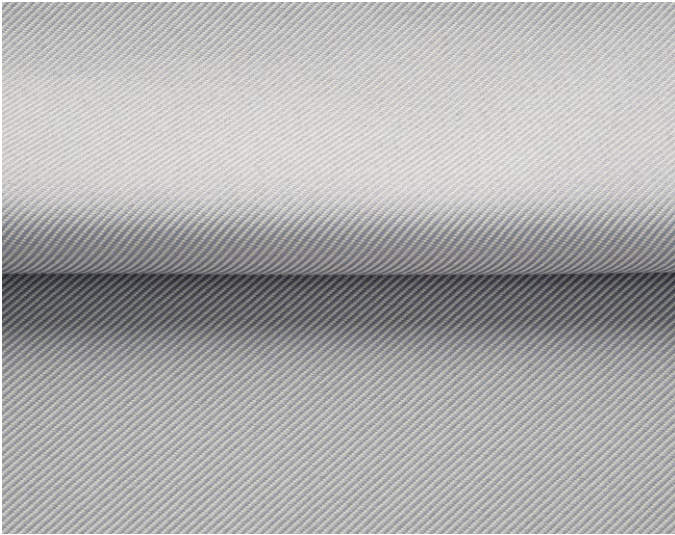
Kvadrat was established in Denmark in 1968 and has deep roots in Scandinavia's world-famous design tradition. A leader in design innovation, Kvadrat produces high-performance, design textiles, rugs, acoustic and window covering solutions for both commercial and residential interiors.

Our products reflect our commitment to colour, quality, simplicity and innovation. We consistently push the aesthetic, technological and functional properties of textiles. In doing so, we collaborate with leading designers, architects and artists including: Miriam Bäckström, Raf Simons, Ronan and Erwan Bouroullec, Thomas Demand, Olafur Eliasson, Alfredo Häberli, Akira Minagawa, Peter Saville, Roman Signer, Doshi Levien and Patricia Urquiola.

For further information, please contact
press@kvadrat.org

kvadrat.dk

kvadrat



Reflect

Abrasion

Approx. 100.000 Martindale rubs, EN ISO 12947

Abrasion test results exceeding ACT performance guidelines are not an indicator of product lifespan. Multiple factors affect fabric durability and appearance retention

Pilling

Note 4, EN ISO 12945

Seam slippage

Seam parallel to warp: 2.5 mm parallel to weft: 2.5 mm
EN ISO 13 936-2 180 Newton

Lightfastness

Note 5-7 ISO 105-B02

Fastness to rubbing

Dry note 5 ISO 105-X12

Wet note 5 ISO 105-X12

Absorption

0.45/Class D (flat), 0.70/Class C (waved) EN ISO 354

Airflow

2430 Pa s/m EN 29053

Flame resistance

AS/NZS 3837 class 1

ASTM E84 Class A Unadhered

ASTM E84 Class B Adhered

BS 5852 crib 5 with treatment *

BS 5852 part 1 with treatment *

EN 1021-1/2

US Cal. Bull. 117-2013

Free from added flame retardant chemicals as standard

** To pass this test flame retardant treatment is necessary.*

We are looking into more environmentally friendly alternatives but for now, the external finisher may use a treatment containing halogen-based flame retardants

Reflect

Design: Patricia Urquiola

Type: Upholstery

Composition: 100% post-consumer recycled polyester

Yarn type: Filament

Binding: Twill

Width: Approx. 140 cm, 55 inches

Weight: Approx. 430 g/lin.m, 13.9 oz/ly

Repeat: None

Colour difference may occur

Cleaning: Vacuum clean frequently, ideally every week if fixed covers. Remove stains as soon as they occur, with clean warm water or sparkling water. Extraction clean when necessary. Extraction cleaning might dissolve water-based glue. Pay attention to temperature and amount of cleaning fluid.

Also washable at 60-80°C, half wash load. Drip drying.

Mount in moist condition. Shrinkage app. 2% at 60°C.

Be aware of increased shrinking and creasing the higher the temperature.

Disinfection, see kvadrat.dk

More info: Care and maintenance kvadrat.dk

60/ X X A P



kvadrat

ACT Guidelines Woven fabrics

Flammability

US Cal. Bull. 117-2013

Dry & Wet Crocking

Dry Crocking: Grade 5.0

Wet Crocking: Grade 5.0

Colour Fastness to Light

Grade 4.5 minimum 40 hours

Physical properties

Pilling Class 4-5

Breaking Strength warp 282 / weft 280 lbs.

Seam Slippage warp 81 / weft 82 lbs.

Abrasion

100.000 cycles Martindale – High Traffic / Public Spaces

Quality benefits

Complies with Möbelfakta

Very good abrasion

Very good lightfastness

Permanent flame retardant

Washable

Environmental benefits

Made of 100% recycled post-consumer plastic bottles

Using waste as a resource

Mono-material designed for circularity

Recyclable

Decreased CO₂-footprint

Follow the EU Ecolabel dye restrictions incl. AZO dye

and heavy metal restrictions

No content of PFCs or 'PFAS'

REACH compliant

Californian Proposition 65 list compliant

LBC Red list compliant

Green building certificates

Greenguard Gold: Low chemical emission

Environmental Product Declaration (EPD): Based on a LCA

following EN 15804 and follow the standard of ISO 14040

Health Product Declaration (HPD): Declaring textile content

and substance

Country of origin

Holland

Warranty

10 years. See terms and conditions on kvadrat.dk

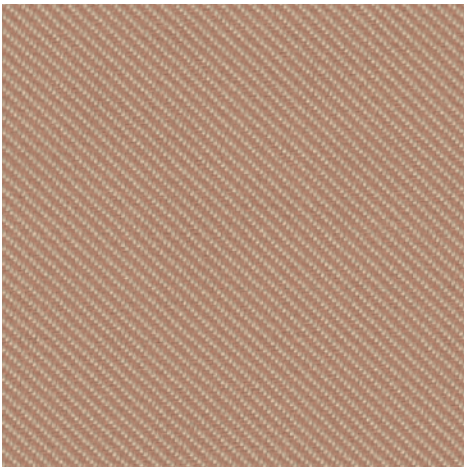
Kvadrat packaging and cardboard is recyclable. Cardboard material is FSC certified and / or contains recycled content.

For further information

kvadrat.dk

kvadrat

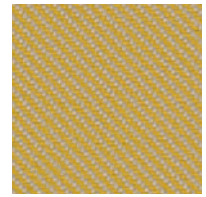
Reflect



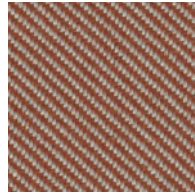
HS RF22 / KV224



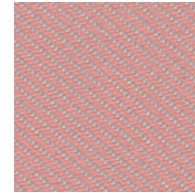
HS RF40 / KV404



HS RF43 / KV434



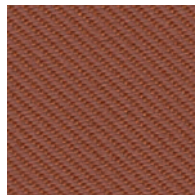
HS RF44 / KV444



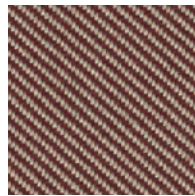
HS RF61 / KV614



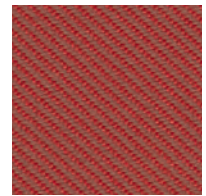
HS RF27 / KV274



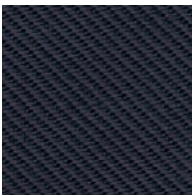
HS RF46 / KV464



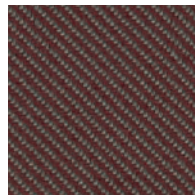
HS RF34 / KV344



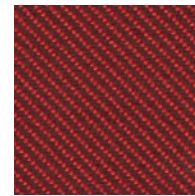
HS RF56 / KV564



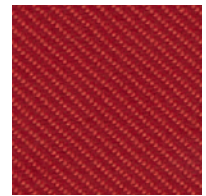
HS RF69 / KV694



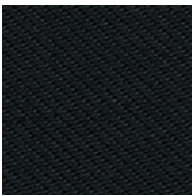
HS RF37 / KV374



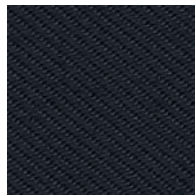
HS RF57 / KV574



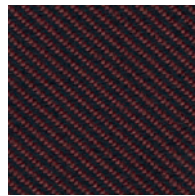
HS RF64 / KV644



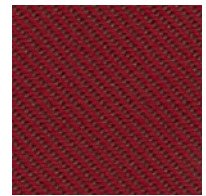
HS RF19 / KV194



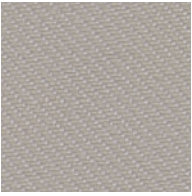
HS RF79 / KV794



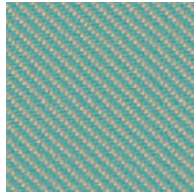
HS RF38 / KV384



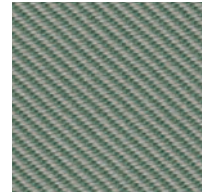
HS RF67 / KV674



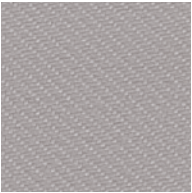
HS RF20 / KV204



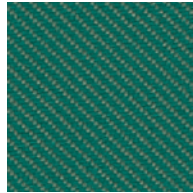
HS RF82 / KV824



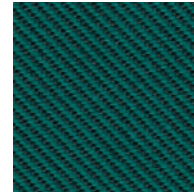
HS RF92 / KV924



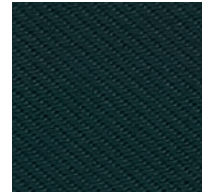
HS RF10 / KV104



HS RF96 / KV964



HS RF98 / KV984



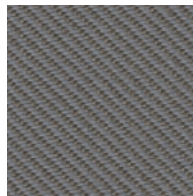
HS RF99 / KV994



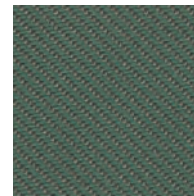
HS RF11 / KV114



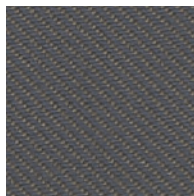
HS RF12 / KV124



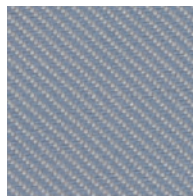
HS RF15 / KV154



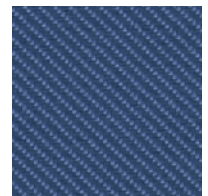
HS RF94 / KV944



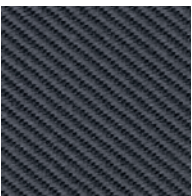
HS RF16 / KV164



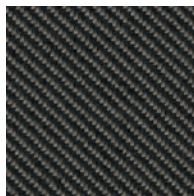
HS RF71 / KV714



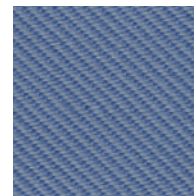
HS RF77 / KV774



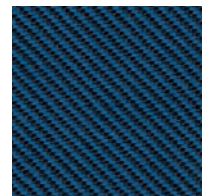
HS RF17 / KV174



HS RF18 / KV184



HS RF74 / KV744



HS RF88 / KV884