



Test Report

No.: SZRL2016080105

Date: Aug. 19, 2016

Page 1 of 7

PERIXX COMPUTER GMBH

HEERDTER LANDSTRASSE 189E 40549 DÜSSELDORF, GERMANY

The following sample(s) was/were submitted and identified on behalf of the client as:

Sample Description: PERIBOARD-517
Manufacture: Perixx Computer GmbH
Test Quantity: 2PCS
SGS Refer No.: GZRL2016082004
Sample Receiving Date: Aug. 09, 2016
Test period: Aug. 09, 2016 to Aug. 16, 2016
Test Requested:
1. Dust Test - IP6X
2. Waterproof Test - IPX5
Test Method: Refer to IEC 60529:2013+CORR:2013+CORR2:2015 and client's requirements
Test Result(s): For further details, please refer to the following page(s)

Signed for and on behalf of

SGS-CSTC Ltd. Shenzhen Branch

James Zhu

Reliability Lab

Damon Li

Engineer



This document is issued by the Company subject to its General Conditions of Service printed overleaf, available on request or accessible at <http://www.sgs.com/en/Terms-and-Conditions.aspx> and, for electronic format documents, subject to Terms and Conditions for Electronic Documents at <http://www.sgs.com/en/Terms-and-Conditions/Terms-e-Documents.aspx>. Attention is drawn to the limitation of liability, indemnification and jurisdiction issues defined therein. Any holder of this document is advised that information contained hereon reflects the Company's findings at the time of its intervention only and within the limits of Client's instructions, if any. The Company's sole responsibility is to its Client and this document does not exonerate parties to a transaction from exercising all their rights and obligations under the transaction documents. This document cannot be reproduced except in full, without prior written approval of the Company. Any unauthorized alteration, forgery or falsification of the content or appearance of this document is unlawful and offenders may be prosecuted to the fullest extent of the law. Unless otherwise stated the results shown in this test report refer only to the sample(s) tested and such sample(s) are retained for 30 days only.

Attention: To check the authenticity of testing /inspection report & certificate, please contact us at telephone: (86-755) 8307 1443, or email: CN.Doccheck@sgs.com

SGS-CSTC Standards Technical Services Co., Ltd.
Shenzhen Branch Reliability Laboratory

SGS Bldg. No. 4, Jianghao Industrial Park, No. 430, Jitua Road, Bantian, Longgang District, Shenzhen, China. 518129 t (86-755) 8602 7257 f (86-755) 8934 0872 www.sgs.com.cn
中国·深圳·龙岗区坂田吉华路430号江豪工业园4栋SGS大楼 邮编: 518129 t (86-755) 8602 7257 f (86-755) 8934 0872 e sgs.china@sgs.com

Member of the SGS Group (SGS SA)

1. Dust Test - IP6X

1.1 Test Method/Specification or Client's Requirement:

a) Test Method/Specification:

Refer to IEC 60529:2013+CORR:2013+CORR2:2015 Clause 13.4 & Clause13.6 and client's requirements.

Test condition:

The enclosure under test is supported inside the test chamber and the pressure inside the enclosure is maintained below the surrounding atmospheric pressure by a vacuum pump. The suction connection shall be made to a hole specially provided for this test. If not otherwise specified in the relevant product standard, this hole shall be in the vicinity of the vulnerable parts.

If it is impracticable to make a special hole, the suction connection shall be made to the cable inlet hole. If there are other holes (for example, more cable inlet holes or drain-holes) these shall be treated as intended for normal use on site.

The object of the test is to draw into the enclosure, by means of depression, a volume of air 80 times the volume of the sample enclosure tested without exceeding the extraction rate of 60 volumes per hour. In no event shall the depression exceed 2 kPa (20 mbar).

The test is continued a period of 8 hours has elapsed.

b) Acceptance conditions:

The product must working properly after test.

Dust deposit the inside sample is accepted.

1.2 Test Result(s):

Sample No.	Conclusion	Remark
1#	Pass	Dust deposit the inside sample, but the function is normal.



This document is issued by the Company subject to its General Conditions of Service printed overleaf, available on request or accessible at <http://www.sgs.com/en/Terms-and-Conditions.aspx> and, for electronic format documents, subject to Terms and Conditions for Electronic Documents at <http://www.sgs.com/en/Terms-and-Conditions/Terms-e-Document.aspx>. Attention is drawn to the limitation of liability, indemnification and jurisdiction issues defined therein. Any holder of this document is advised that information contained hereon reflects the Company's findings at the time of its intervention only and within the limits of Client's instructions, if any. The Company's sole responsibility is to its Client and this document does not exonerate parties to a transaction from exercising all their rights and obligations under the transaction documents. This document cannot be reproduced except in full, without prior written approval of the Company. Any unauthorized alteration, forgery or falsification of the content or appearance of this document is unlawful and offenders may be prosecuted to the fullest extent of the law. Unless otherwise stated the results shown in this test report refer only to the sample(s) tested and such sample(s) are retained for 30 days only.

Attention: To check the authenticity of testing /inspection report & certificate, please contact us at telephone: (86-755) 8307 1443, or email: CN.Doccheck@sgs.com

SGS Standards Technical Services Co., Ltd.
Shenzhen Branch, Reliability Laboratory

SGS Bldg. No. 4, Jianghao Industrial Park, No. 430, Jitua Road, Bantian, Longgang District, Shenzhen, China. 518129 t (86-755) 8602 7257 f (86-755) 8934 0872 www.sgsgroup.com.cn
中国·深圳·龙岗区坂田吉华路430号江澜工业园4栋SGS大楼 邮编: 518129 t (86-755) 8602 7257 f (86-755) 8934 0872 e sgs.china@sgs.com

1.3 Test Photo(s):



Fig.1 Appearance inspection before test



Fig.2 Appearance inspection after test



Fig.3 Appearance inspection after test



Fig.4 Appearance inspection after test



Fig.5 Function inspection before test



Fig.6 Function inspection after test



Fig.7 Test setup

Test Report

No.: SZRL2016080105

Date: Aug. 19, 2016

Page 5 of 7

2. Waterproof Test - IPX5

2.1 Test Method/Specification or Client's Requirement:

a) Test Method/Specification:

Refer to IEC 60529:2013+CORR:2013+CORR2:2015 Clause 14.2.5 & Clause 14.3.

Test condition:

- Internal diameter of the nozzle: 6.3 mm
- Delivery rate: 12.5 l/min \pm 5 %
- Test duration: 3 min
- Distance from nozzle to enclosure surface: between 2.5 m and 3 m

b) Acceptance condition:

The product must working properly after test.

Water entered into the inside sample is accepted.

1.2 Test Result(s):

Sample No.	Conclusion	Remark
2#	Pass	Water entered into the inside sample, but the function is normal



This document is issued by the Company subject to its General Conditions of Service printed overleaf, available on request or accessible at <http://www.sgs.com/en/Terms-and-Conditions.aspx> and, for electronic format documents, subject to Terms and Conditions for Electronic Documents at <http://www.sgs.com/en/Terms-and-Conditions/Terms-e-Document.aspx>. Attention is drawn to the limitation of liability, indemnification and jurisdiction issues defined therein. Any holder of this document is advised that information contained hereon reflects the Company's findings at the time of its intervention only and within the limits of Client's instructions, if any. The Company's sole responsibility is to its Client and this document does not exonerate parties to a transaction from exercising all their rights and obligations under the transaction documents. This document cannot be reproduced except in full, without prior written approval of the Company. Any unauthorized alteration, forgery or falsification of the content or appearance of this document is unlawful and offenders may be prosecuted to the fullest extent of the law. Unless otherwise stated the results shown in this test report refer only to the sample(s) tested and such sample(s) are retained for 30 days only.

Attention: To check the authenticity of testing /inspection report & certificate, please contact us at telephone: (86-755) 8307 1443, or email: CN.Doccheck@sgs.com

SGS Bldg, No. 4, Jianghao Industrial Park, No. 430, Jihua Road, Bantian, Longgang District, Shenzhen, China. 518129 t (86-755) 8602 7257 f (86-755) 8934 0872 www.sgs.com.cn
中国·深圳·龙岗区坂田吉华路430号江灏工业园4栋SGS大楼 邮编: 518129 t (86-755) 8602 7257 f (86-755) 8934 0872 e sgs.china@sgs.com

2.3 Test Photo(s):



Fig.8 Appearance inspection before test



Fig.9 Appearance inspection after test

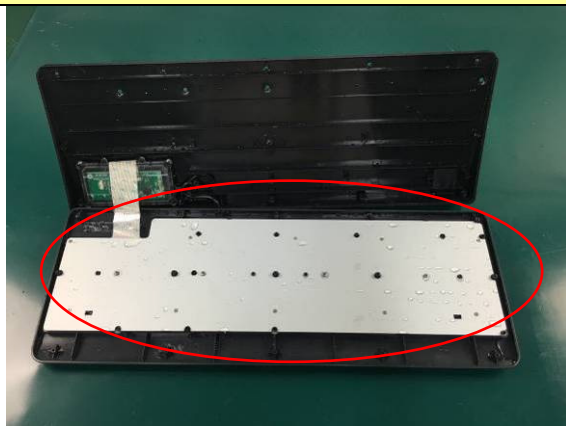


Fig.10 Appearance inspection after test

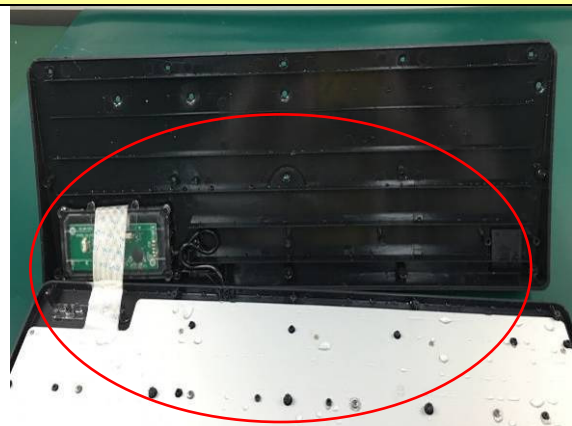


Fig.11 Appearance inspection after test



Fig.12 Function inspection before test



Fig.13 Function inspection after test



Fig.14 Test setup

End of Report